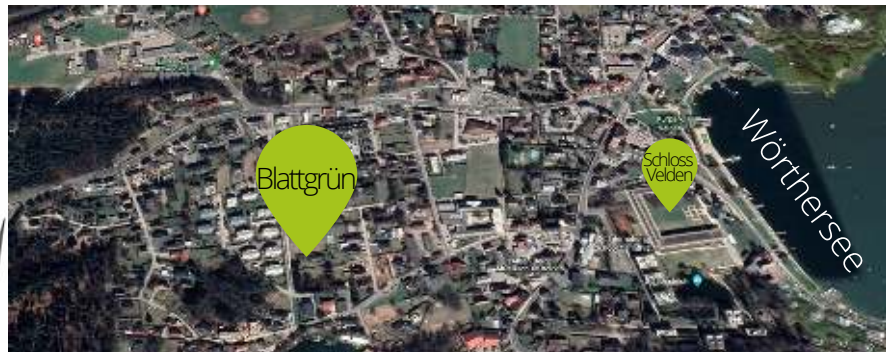
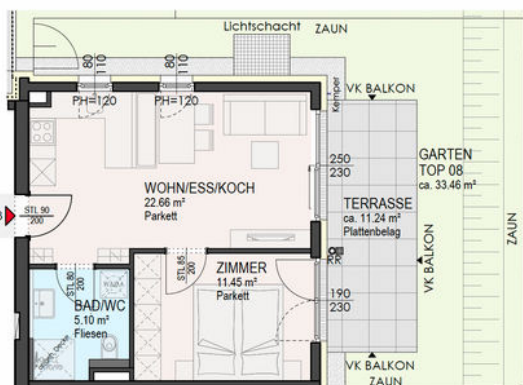




BLATTGRÜN WOHNANLAGE VELDEN TOP 8 | HAUS B | EG

Wohnfläche:	39,21 m ²
Zimmer:	2
Terrasse:	11,24 m ²
Garten:	33,46 m ²
€ 330.000,-	



MARTIN-LUTHER-STRASSE, 9220 VELDEN AM WÖRTHERSEE

ALL IN ONE IMMOBILIEN ☎ 0664/92 90 490 ✉ HPW@ALLINONE.IMMO