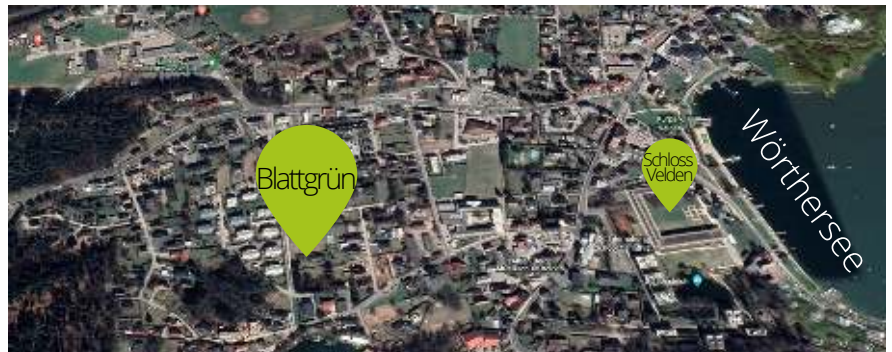
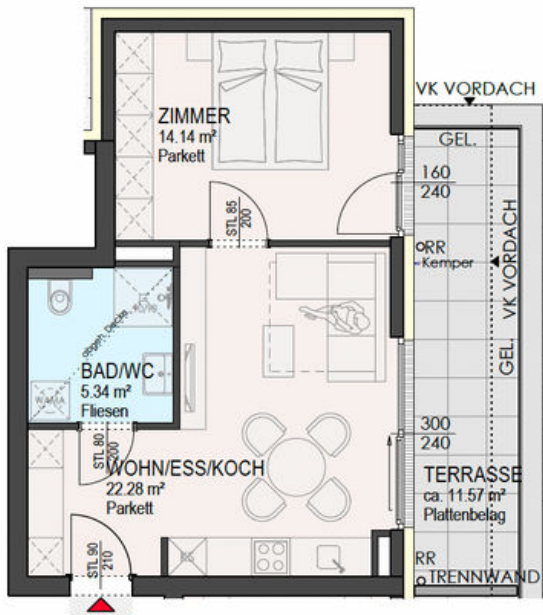




## BLATTGRÜN WOHNANLAGE VELDEN TOP 20 | HAUS B | PH

Wohnfläche:	41,76 m <sup>2</sup>
Zimmer:	2
Terrasse:	11,57 m <sup>2</sup>

€ 420.000,-



MARTIN-LUTHER-STRASSE, 9220 VELDEN AM WÖRTHERSEE

ALL IN ONE IMMOBILIEN ☎ 0664/92 90 490 ✉ HPW@ALLINONE.IMMO