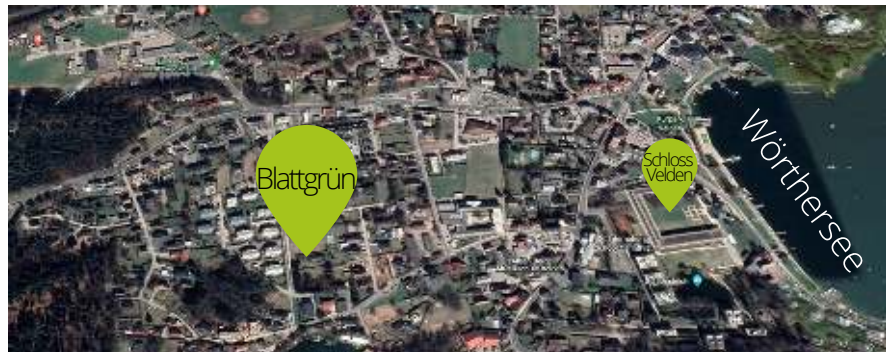
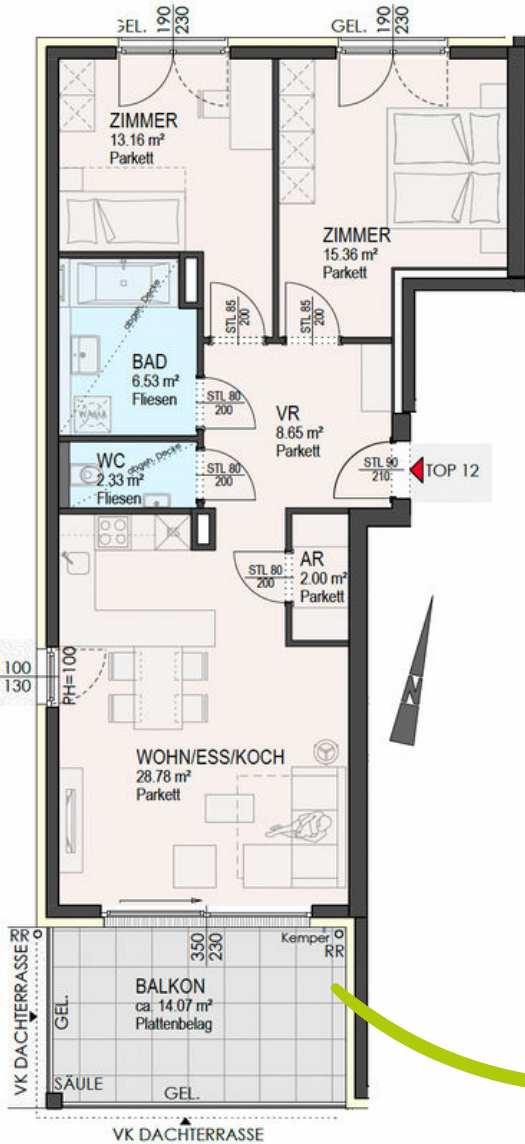




## BLATTGRÜN WOHNANLAGE VELDEN TOP 12 | HAUS B | OG

Wohnfläche:	76,81 m <sup>2</sup>
Zimmer:	3
Balkon:	14,07 m <sup>2</sup>

€ 715.000,-



MARTIN-LUTHER-STRASSE, 9220 VELDEN AM WÖRTHERSEE

ALL IN ONE IMMOBILIEN ☎ 0664/92 90 490 ✉ HPW@ALLINONE.IMMO